

Outer Dowsing Offshore Wind

Environmental Statement

Chapter 14 Commercial Fisheries

Volume 2 Figures

Date: March 2024

Document Reference: 6.2.14

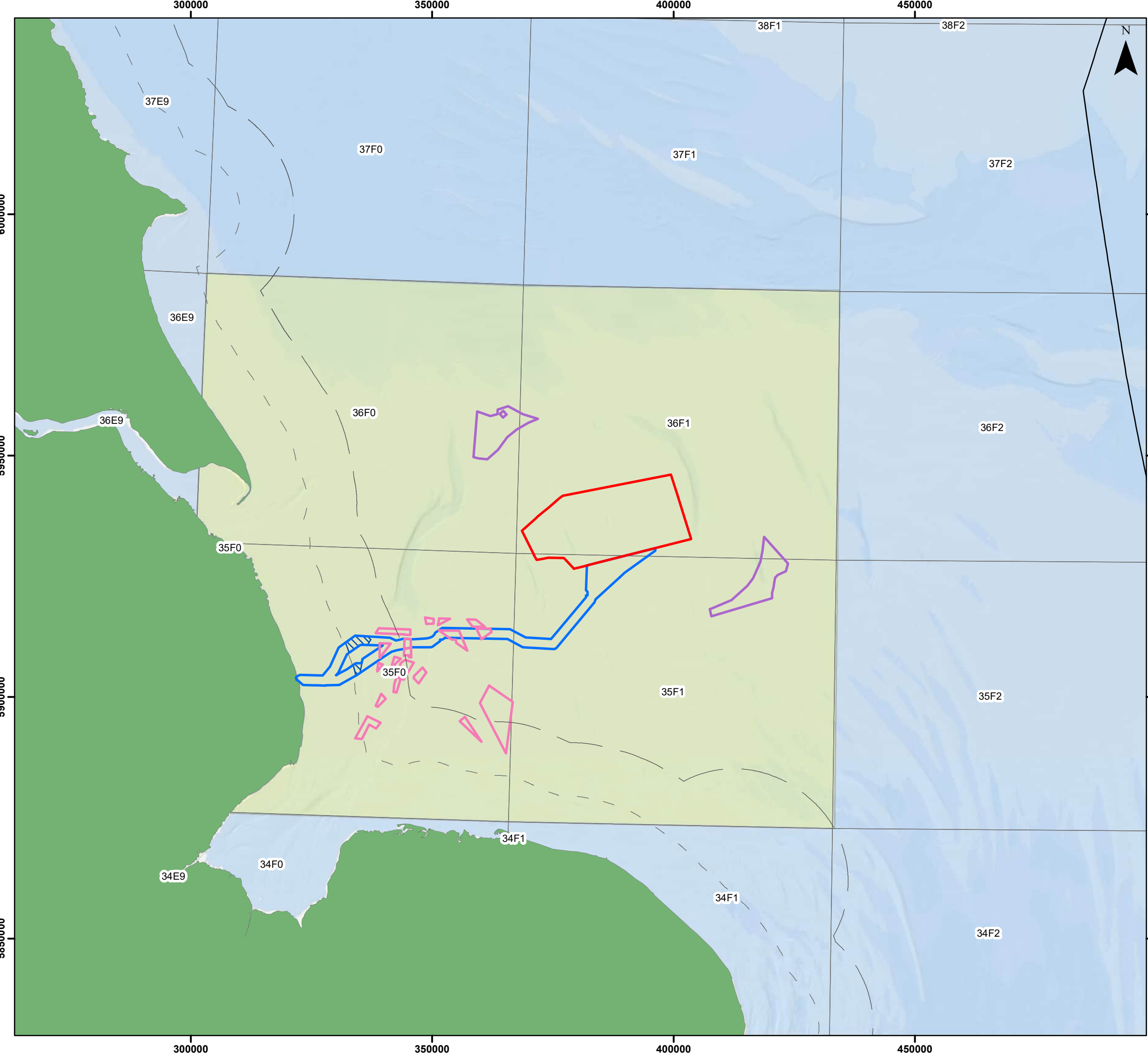
Pursuant to APFP Regulation: 5(2)(a)

Rev: 1:0

Company:	Outer Dowsing Offshore Wind	Asset:	Whole Asset			
Project:	Whole Wind Farm	Sub Project/Package:	Whole Asset			
Document Title or Description:	Chapter 14 Commercial Fisheries Figures					
Internal Document Number:	PP1-ODOW-DEV-CS-FIG-0014	3 rd Party Doc No (If applicable):	N/A			
Outer Dowsing Offshore Wind accepts no liability for the accuracy or completeness of the information in this document nor for any loss or damage arising from the use of such information.						
Rev No.	Date	Status / Reason for Issue	Author	Checked by	Reviewed by	Approved by
01	March 2024	DCO Application	GoBe / SLR/ODOW	GoBe	Shepherd & Wedderburn	Outer Dowsing

Table of Figures

- Figure 14.1 Study area (document reference 6.2.14.1)



Legend

- Array Area
- Offshore Export Cable Corridor
- ORCP Area
- Artificial Nesting Structure Area
- Biogenic Reef Restoration Area
- Commercial Fisheries Study Area
- ICES Statistical Rectangles

Fishing Limits

- 6 NM
- 12 NM
- 200 NM

Coordinate System: WGS 1984 UTM Zone 31N

0 25 50 km

Scale: 1:750,000 A3 Page Size

Environmental Statement

Commercial fisheries study area, incorporating ICES rectangles 36F1, 35F1, 36F0 and 35F0

Figure 14.1

OUTER DOWSING
OFFSHORE WIND

Date: 29/02/2024
Produced By: FN
Revision: 0.1

Contains ESRI Basemapping; Esri, Garmin, GEBCO, NOAA NGDC, and other contributors

GoBe

Document Path: D:\Projects\1705 OGDW Outer Dowsing\ES\mxd_files\updated_v4\OD_0152_CF_14.1_Study Area.mxd